



TEMENOS™

# Installation Advisory for jBASE



**Installation Guides**

**Copyright**  
Copyright (c) 2008 TEMENOS HOLDINGS NV

All rights reserved.

This document contains proprietary information that is protected by copyright. No part of this document may be reproduced, transmitted, or made available directly or indirectly to a third party without the express written agreement of TEMENOS UK Limited. Receipt of this material directly from TEMENOS UK Limited constitutes its express permission to copy. Permission to use or copy this document expressly excludes modifying it for any purpose, or using it to create a derivative therefrom. TEMENOS UK Limited, makes no warranty of any kind with regard to the material contained in this manual, including but not limited to the implied warranties of merchantability and fitness for a particular purpose.

The information contained in this manual is subject to change without notice.

#### **Acknowledgements**

Information regarding Unicode has been provided in part courtesy of the Unicode Consortium. The Unicode Consortium is a non-profit organization founded to develop, extend and promote use of the Unicode Standard, which specifies the representation of text in modern software products and standards. The membership of the consortium represents a broad spectrum of corporations and organizations in the computer and information processing industry. The consortium is supported financially solely through membership dues. Membership in the Unicode Consortium is open to organizations and individuals anywhere in the world who support the Unicode Standard and wish to assist in its extension and implementation.

Portions of the information included herein regarding IBM's ICU has been reprinted by permission from International Business Machines Corporation copyright 2001

jBASE, jBASIC, jED, jSHELL, jLP, jEDI, jCL, jQL, j1, j2 j3 j4 and jPLUS files are trademarks of TEMENOS Holdings NV.

REALITY is a trademark of Northgate Solutions Limited.

PICK is a trademark of Raining Data Inc.

All other trademarks are acknowledged.

Java and all Java-based trademarks and logos are trademarks or registered trademarks of Sun Microsystems, Inc. in the United States and other countries.

Windows, Windows NT, and Excel are either registered trademarks or trademarks of Microsoft Corporation in the United States and/or other countries.

UNIX is a registered trademark in the United States and other countries licensed exclusively through X/Open Company Limited.

Other company, product, and service names used in this publication may be trademarks or service marks of others.

### **Errata and Comments**

If you have any comments regarding this manual or wish to report any errors in the documentation, please document them and send them to the address below:

Technical Publications Department

TEMENOS UK Limited

2 PeopleBuilding

Hemel Hempstead

Hertfordshire

HP2 4NW

England

Tel SB: +44 (0) 1442 431000

Fax: +44 (0) 1442 431001

Please include your name, company, address, and telephone and fax numbers, and email address if applicable. [documentation@temenos.com](mailto:documentation@temenos.com)

## Contents

Documentation Conventions .....	vi
<b>INSTALLING ON UNIX.....</b>	<b>1</b>
Permissions .....	1
Directory .....	1
Disk Space .....	1
Installation .....	1
<b>Installing on WINDOWS .....</b>	<b>2</b>
WELCOME PANEL .....	3
Installation Type .....	4
Customized installation .....	5
Installation Type (jBASE has been installed previously).....	6
End User License Agreement (EULA).....	8
Upgrading .....	9
Install Summary .....	10
Installation progress.....	11
Installation Complete.....	12
Post installation.....	13
Delete temporary files.....	15
Uninstalling jBASE 4.1 .....	16
Advanced installation .....	17
Troubleshooting.....	18
<b>INDEX .....</b>	<b>xix</b>
<b>Comment Sheet .....</b>	<b>ii</b>

## Documentation Conventions

This manual uses the following conventions:

Convention	Usage
<b>BOLD</b>	In syntax, bold indicates commands, function names, and options. In text, bold indicates keys to press, function names, menu selections, and MS-DOS commands.
<b>UPPERCASE</b>	In syntax, uppercase indicates JBASE commands, keywords, and options; BASIC statements and functions; and SQL statements and keywords. In text, uppercase also indicates JBASE identifiers such as filenames, account names, schema names, and Windows NT filenames and pathnames.
<b>UPPERCASE</b> <i>Italic</i>	In syntax, italic indicates information that you supply. In text, italic also indicates UNIX commands and options, filenames, and pathnames.
<b>COURIER</b>	Courier indicates examples of source code and system output.
<b>COURIER BOLD</b>	<b>Courier Bold</b> In examples, courier bold indicates characters that the user types or keys (for example, <Return>).
<b>[]</b>	Brackets enclose optional items. Do not type the brackets unless indicated.
<b>{ }</b>	Braces enclose nonoptional items from which you must select at least one. Do not type the braces.
<b>ITEMA   ITEMB</b>	A vertical bar separating items indicates that you can choose only one item. Do not type the vertical bar.
<b>...</b>	Three periods indicate that more of the same type of item can optionally follow.

⇒ A right arrow between menu options indicates you should choose each option in sequence. For example, “Choose **File** ⇒ **Exit**” means you should choose **File** from the menu bar, and then choose **Exit** from the File pull-down menu.

Syntax definitions and examples are indented for ease in reading.

All punctuation marks included in the syntax—for example, commas, parentheses, or quotation marks—are required unless otherwise indicated.

Syntax lines that do not fit on one line in this manual are continued on subsequent lines. The continuation lines are indented. When entering syntax, type the entire syntax entry, including the continuation lines, on the same input line.



# INSTALLING ON UNIX

## Permissions

Set the 'umask' to enable the correct Unix permissions for the files about to be installed.

```
umask 0
```

## Directory

Create the directory into which you are installing jBASE 4.1.5, eg :

```
mkdir /home/jbc415
```

This directory path will subsequently be used as the '\$JBCRELEASEDIR' environment variable setting.

## Disk Space

[ ensure the volume in which you are installing jBASE 4.1.5 has sufficient free disk space, approximately 500Mb is required, plus additional space for any temporary files ]

```
df -k          [ will show the current disk usage within each Unix volume ]
```

## Installation

'cd' to the directory just created, eg :

```
cd /home/jbc415
```

Uncompress the appropriate 'tar.gz' file, eg for 32 bit Aix 5.x :

```
gzip -d 32bit_jbase4_4.1.5.22_aix51.tar.gz
```

Install the jBASE release using :

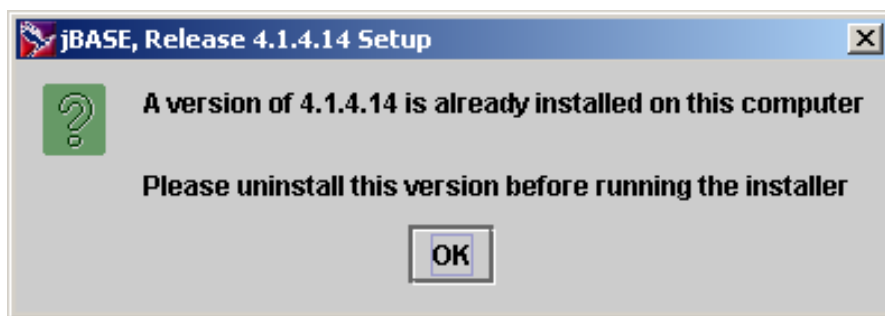
```
tar -xvf 32bit_jbase4_4.1.5.22_aix51.tar
```

## Installing on Windows

Start the installation wizard by running the files “setup.bat”.

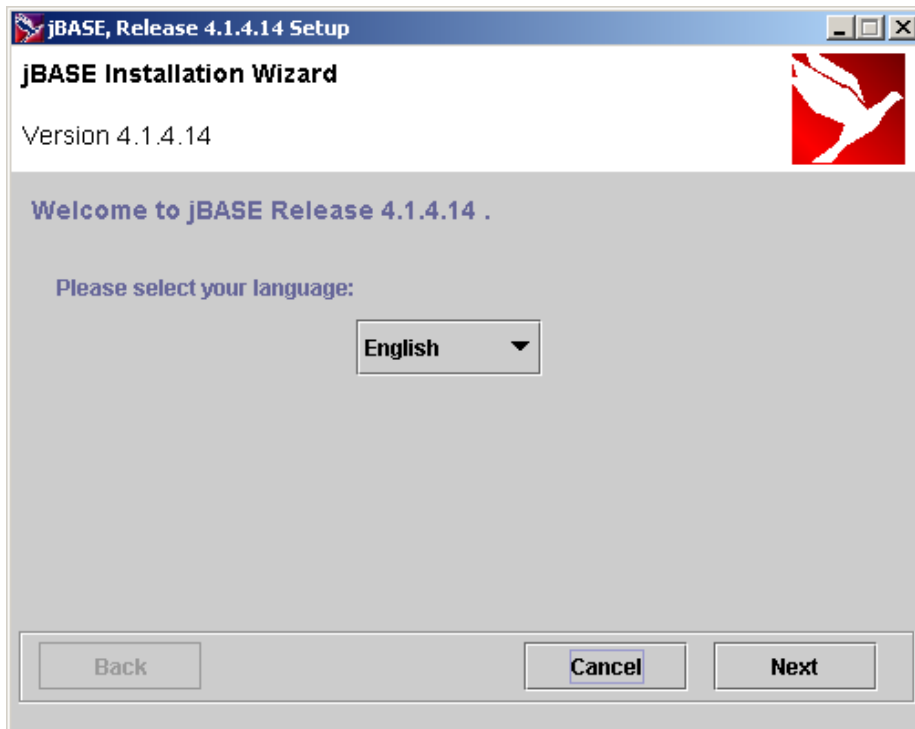
**Note.**

On windows, if jBASE is already installed and is the same version as the installer version, you will be prompted with a dialog box like that shown below. You will not be able to install jBASE until the installed version has been uninstalled.



## WELCOME PANEL

The first screen allows you to choose your installation language.



Select your language by clicking on the down arrow then press next.

## Installation Type

If jBASE has not been installed on your windows platform before, you will be prompted with 2 options (see below if jBASE has been installed previously) :

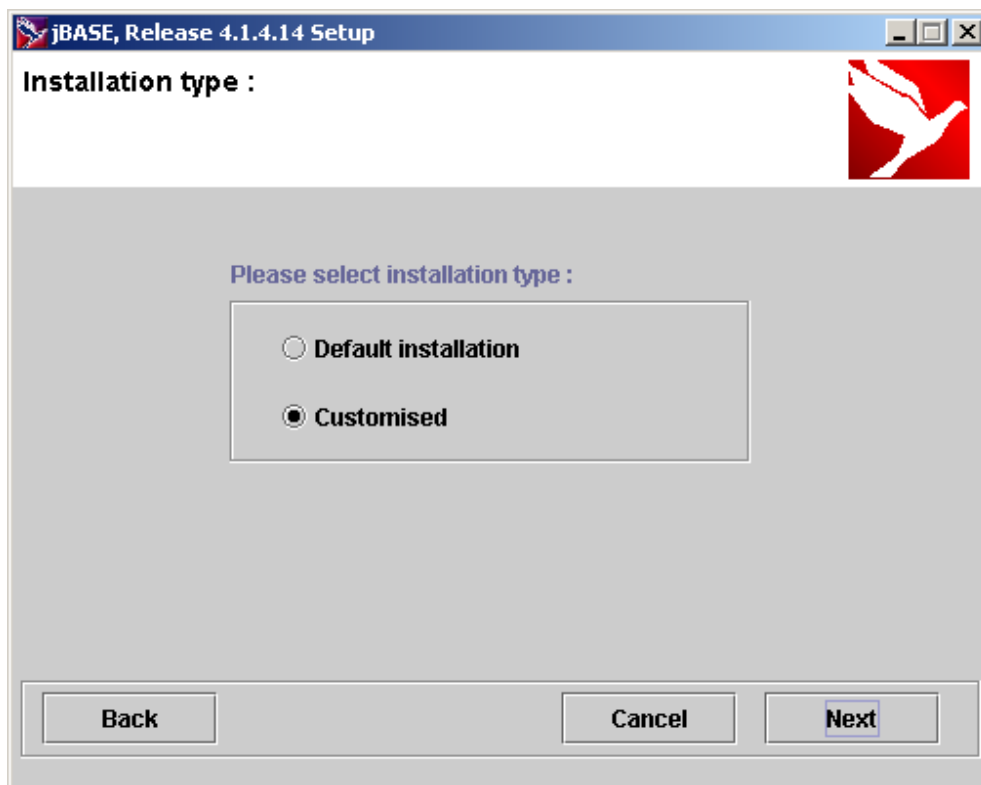
### Default Installation

- By choosing a default installation you are loading all the available applications to your designated file

### Customized

- Select which file(s) you want to load onto your system

Select your installation type by clicking the appropriate radio button then click “Next”.

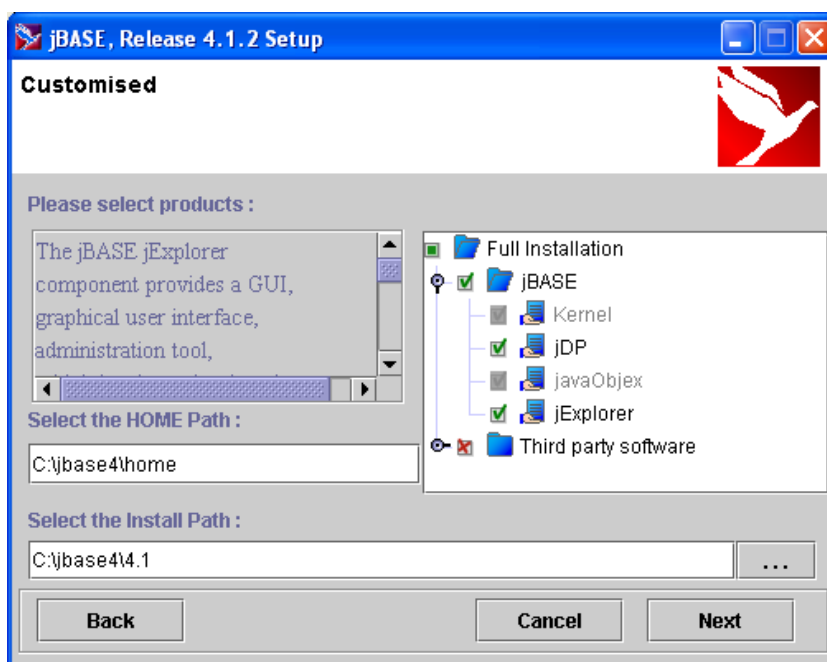


## Customized installation

Choose which jBase product(s) you want to install. When you choose to install jDP, Attunity will be installed in silent mode.

If you don't check the "Java development kit", only the necessary java file used by jBASE will be installed (Java Runtime).

By default the installer proposes the following path to install jBASE.



Select which products you wish to install by clicking in the appropriate boxes.

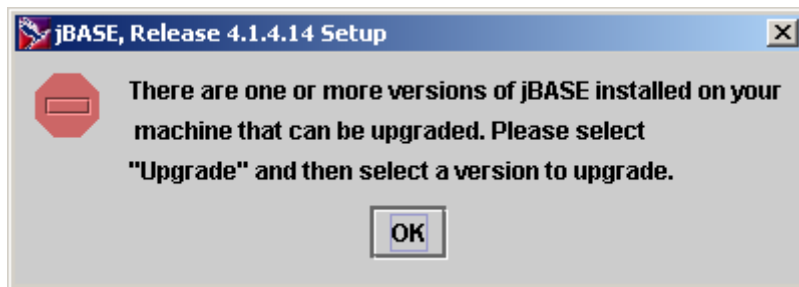
In the "Select the Install Path" you can either load jBASE to the default location or click on "... " To open a file chooser dialog windows and select your own directory into which you can load jBASE.

On Windows, you can set the HOME environment variable used by jBASE.

Press "**Next**" to continue.

## Installation Type (jBASE has been installed previously)

If jBASE has been installed on your windows platform before, you will be prompted with 2 options after the following dialog boxes :



Click “ok” and you will be presented with two options :

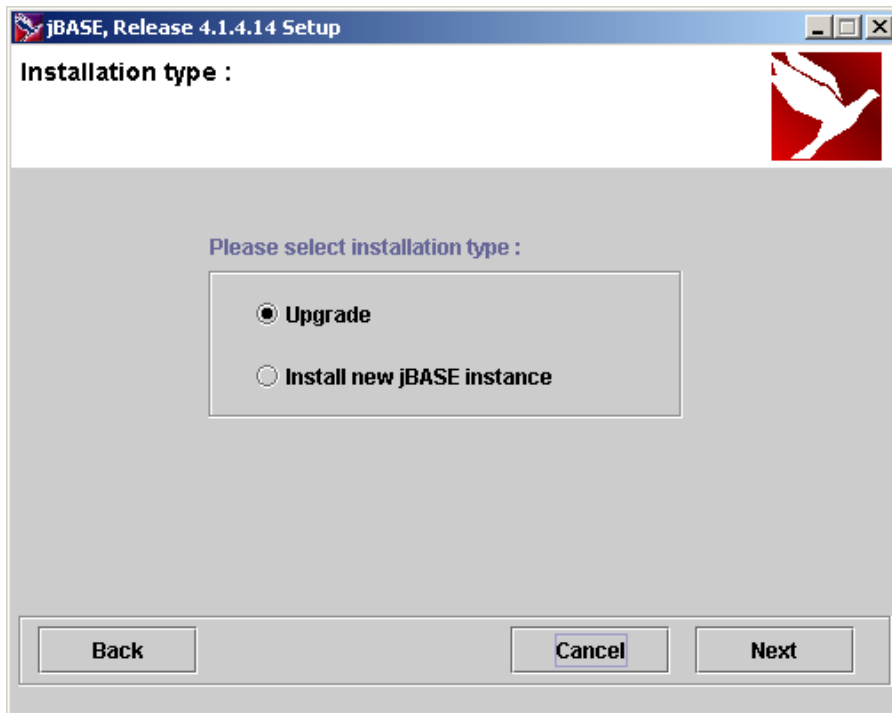
### **Upgrade**

- By choosing “Upgrade”, you are instructing the installer to upgrade a previous installation of jBASE to the current released version

### **Install new jBASE instance**

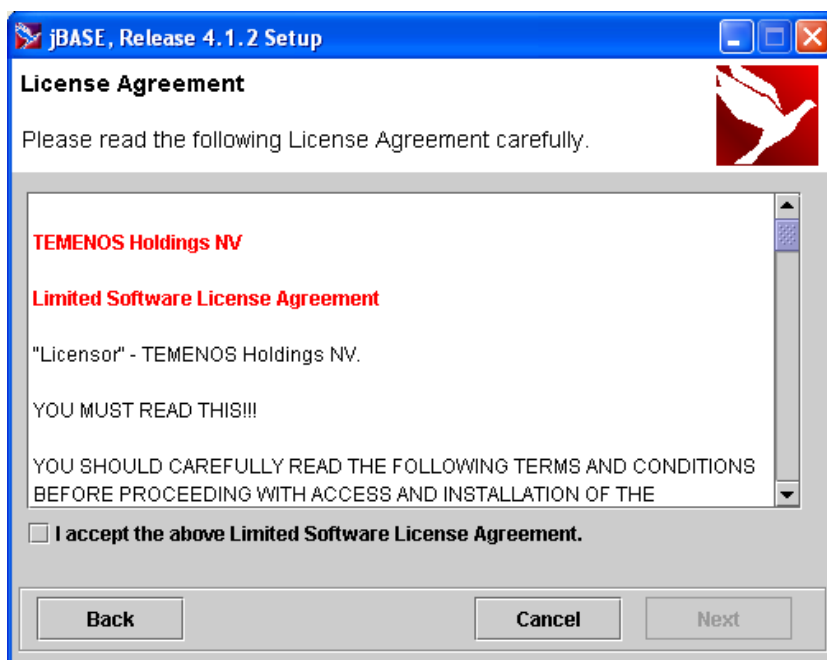
- This is the equivalent of “custom” install. It will allow you to Select which file(s) you want to load onto your system and where you want to load them. (See above for details).

Select your installation type by clicking the appropriate radio button then click “Next”.



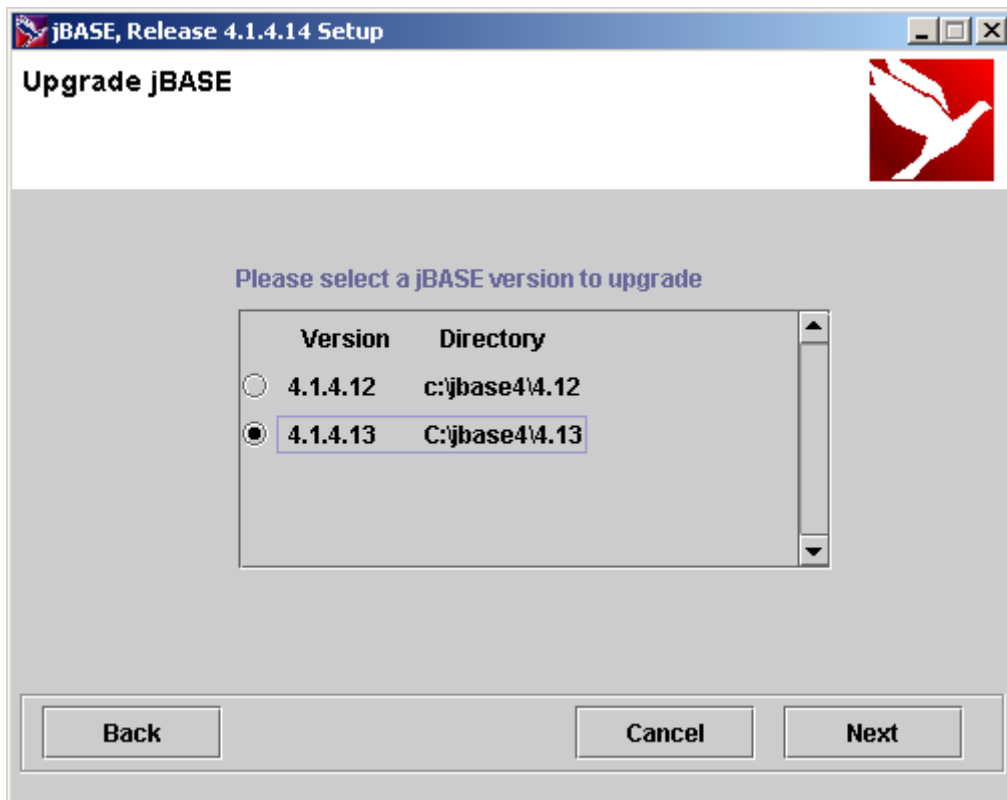
## End User License Agreement (EULA)

You are presented with the End User License Agreement to which you must agree before installation of jBASE can take place. If you agree with the terms of the license check the “I accept the above . . . “ box to indicate your acceptance of the EULA and move to the next screen by clicking on the “Next” button.



## Upgrading

If jBASE is already installed on your windows machine and you selected “Upgrade” in the “Installation Type” panel, you’ll be presented with the “Upgrade jBASE” panel. .

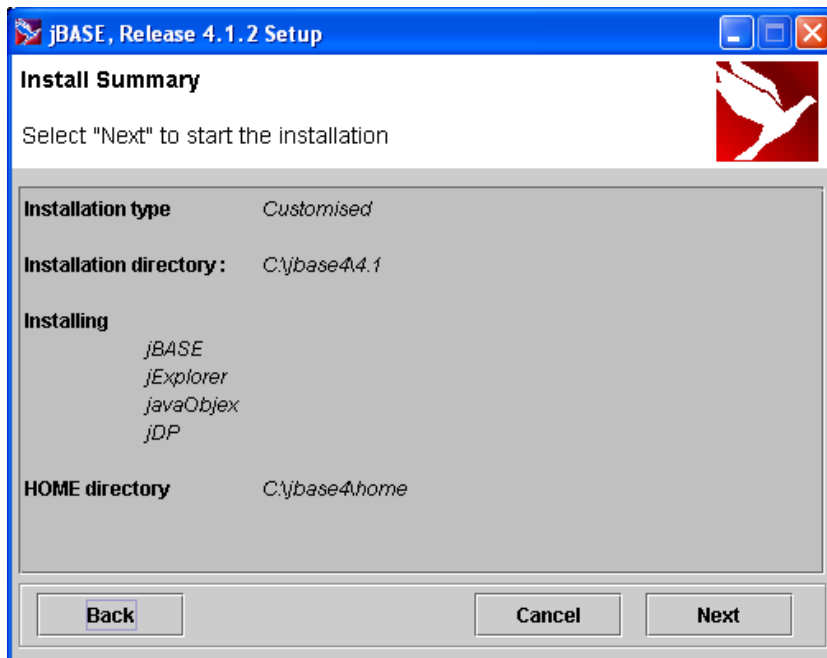


Select a version to be upgraded by clicking the relevant radio button then click “Next”

## Install Summary

The Install summary allows you to check that you have selected the correct components before you continue with the installation. If everything is correct including the installation path click on “Next” to start the installation.

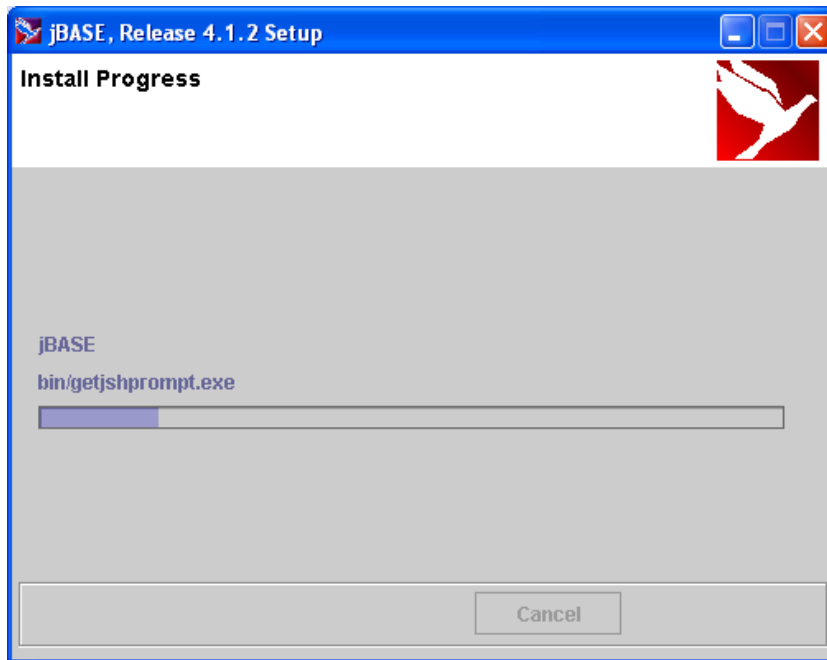
If you need to add or change any of the details click the “Back” button



## INSTALLATION PROGRESS

This shows the progress of the installation.

The First Label is the product name and the second is the relative path file name.

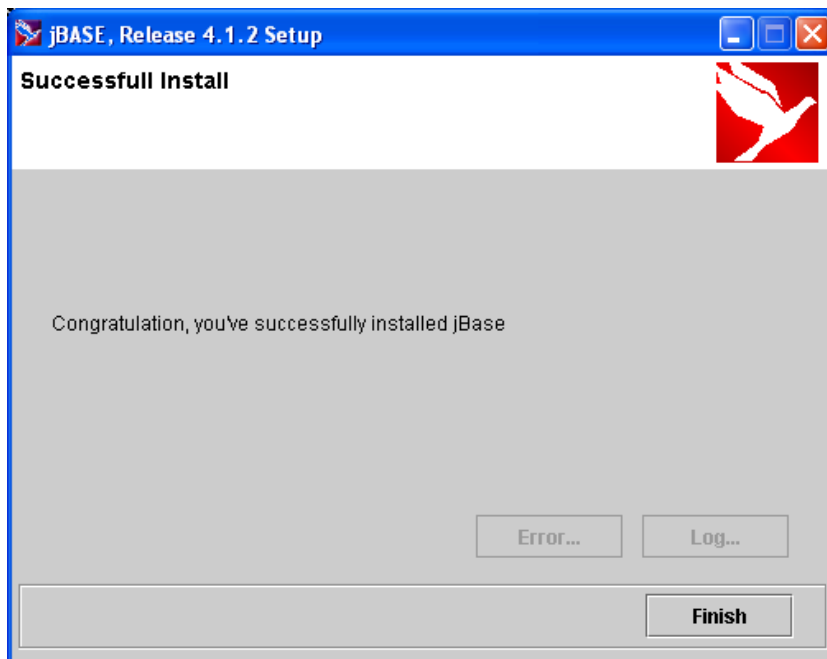


## Installation Complete

When the dialog box below appears the jBASE installation process is complete.

### NOTE :

If the “Upgrade” option was selected, the installer will attempt to upgrade your system by copying over relevant files to your jBASE system. If, for any reason, the upgrade encounters errors, you will be informed by means of a dialog box and then the system will revert to its former state.



## POST INSTALLATION

The installation wizard sets up several critical environment variables necessary for the proper operation of jBASE 4.1 LV. If you wish to use your own JRE or JDK, the environment variables JREDIR or JDKDIR, respectively, could be changed.

In the path where you choose to install jBASE (JBCRELEASEDIR), you will find:

- installError.log** Errors generated by the installation.
- InstallVerbose.log** If the installer was launched in verbose mode (see [Advanced Installation](#)) all is logged on this file.
- jbase\_env.bat** Contains a script, which sets up the environment variables to use the newly installed jBASE.
- env\_backup.txt** Backup of the original environments variable changed by the installer.
- Uninstall.dat** A binary file needed by the Uninstaller.

**NOTE:** When 4.1 is installed - the PATH environment variable is set up to include the Java Run Time Environment (JRE) which is installed with jBASE. This is important, as many components within jBASE are dependent on the contents of the JRE. If the PATH is subsequently changed so that another JRE/JDK is found before the JRE under jBASE 4.1 there may be a need to copy some jar files under <INSTALLPATH>jdk/jre/lib/ext to set the new JRE/JDK external path.

Copy these files if the new JDK/JRE is version 1.3.x then:

- |                 |                  |
|-----------------|------------------|
| 1. dom.jar      | 10. jsse.jar     |
| 2. jaxp-api.jar | 11. out.txt      |
| 3. jcert.jar    | 12. reggie.jar   |
| 4. jdom.jar     | 13. sax.jar      |
| 5. jhall.jar    | 14. sun-util.jar |

6. jini-core.jar
7. jini-ext.jar
8. jnet.jar
9. jsk-policy.jar
15. tools.jar
16. xalan.jar
17. xercesImpl.jar
18. xsltc.jar

If the new JDK/JRE is version 1.4.x then:

19. jdom.jar
20. jhall.jar
21. jini-core.jar
22. jini-ext.jar
23. jsk-policy.jar
24. out.txt
25. reggie.jar
26. sun-util.jar
27. tools.jar

If you installed a new JDK/JRE and you wish to use the jBASE JRE then you could execute the script named jbase\_env.bat to set up the JRE.

### **Delete temporary files**

You can remove the directory created in the section “[Uncompressing Files](#)”, as these files were used to run the installer and are no longer any use.

## **Uninstalling jBASE 4.1**

To uninstall jBASE, select Start → Control Panel → Add or Remove Programs from the Windows desktop.

## Advanced installation

You can run the installer using some optional parameters. To pass parameters to the installer, just add it after setup.bat:

Setup.bat [option]

where [option] is:

- vX            verbose mode.
  - if X=0 then log only in the console
  - if X=1 then log only in a file (<InstallPath>/installVerbose.log)
  - if X=2 then log in the console and a file
- pXXX        [note: If X is omitted then a log to the console is done.](#)  
Select the default installation Path. XXX = default Path (eg: C:\jbase4\4.1)  
  
Set the default installation Path, this is the path where jBase will be installed if default installation is chosen.
- HXXX        Select the default home directory. XXX = default home directory (eg:  
C:\jbase4\Home)

Set the default home directory. This value will overwrite the value coming from the environment variable (HOME) if it is defined.

If the file verbose mode is chosen then at the last panel, you'll find a button to watch the log file.

## **Troubleshooting**

Problems have been experienced when trying to install on Windows systems where the %TEMP% environment variable has been set to a directory which includes space characters. If these problems are encountered, either manually unzip the installer files into a temporary directory prior to installing jBASE or change the %TEMP% environment variable to be set to a directory which does not contain a space.

## INDEX

<b>C</b>		<b>L</b>	
Customized installation		java runtime	5
javaobjex	5	jbase_env.bat	13
jEXPLORER	5	JBCRELEASEDIR	13
		jDP	
		Attunity	5
<b>E</b>		<b>P</b>	
End User License Agreement	8	Language	
env_backup.txt	13	select your	3
environment variables			
JDKDIR	13	<b>S</b>	
JREDIR	13	Progress of the installation	11
<b>I</b>		<b>U</b>	
installError.log	13	Select the Install Path	5
InstallVerbose.log	13	setup.bat (.ksh)"	2
<b>J</b>			
Java development kit		Uninstall.dat	13

# Comment Sheet

Please give page number and description for any errors found:

Page	Error

Please use the box below to describe any material you think is missing; describe any material which is not easily understood; enter any suggestions for improvement; provide any specific examples of how you use your system which you think would be useful to readers of this manual. Continue on a separate sheet if necessary.

Copy and paste this page to a word document and include your name address and telephone number. Email to [documentation@temenos.com](mailto:documentation@temenos.com)